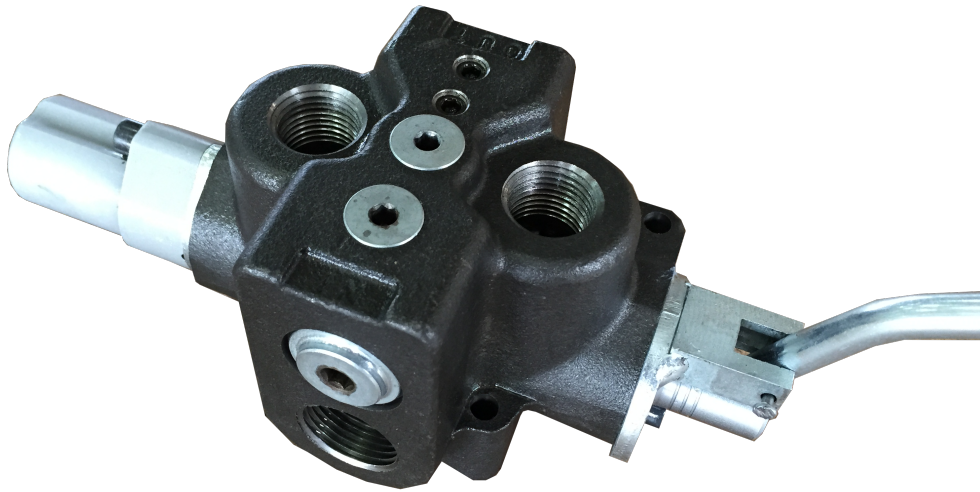


P70LS

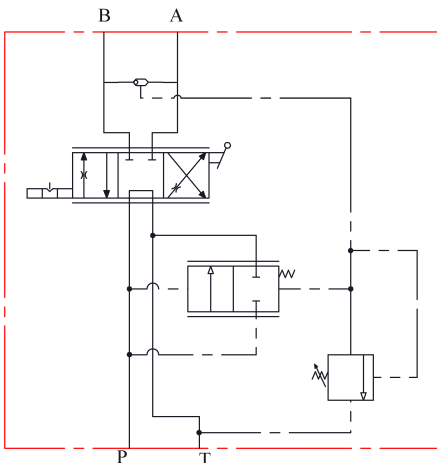
Single spool, 70 l/min directional control valve with pressure compensated flow control



Features:

- Adjustable pilot operated relief valve is standard on every P70LS
- Full range pressure compensated by-pass type flow control valve built in.
- Fine positive metering in either direction with manual handle.
- Precision ground chromium plated spool that assures long life.

Technical specifications		
Flow rate	l/min [gpm]	70 [18]
Max. working pressure	bar [psi]	207 [3000]
T port max. pressure	bar [psi]	25 [360]
Fluid temperature	° C [° F]	-25 to +80 [-13 to 176]
Viscosity range	mm ² /s [cSt]	12-100 [12-100]
Filtering	ISO 4406 βx=75	20/17/25μm
Weight	kg [lbs]	2,9 [6.5]



P70LS/755/TM12/4/L/F1

