

NEW CONTROL VALVE TV18 for tipping trucks & trailers

Three way (pump, cylinder, tank) air operated control valve.

Three positions:

- Hold
- Tipping
- Lowering

Three modes of descent:

- One speed only
- Two speeds (fast and slow)
- Variable descent speed with suitable air control

Relief valve setting up to 350 bar on port C

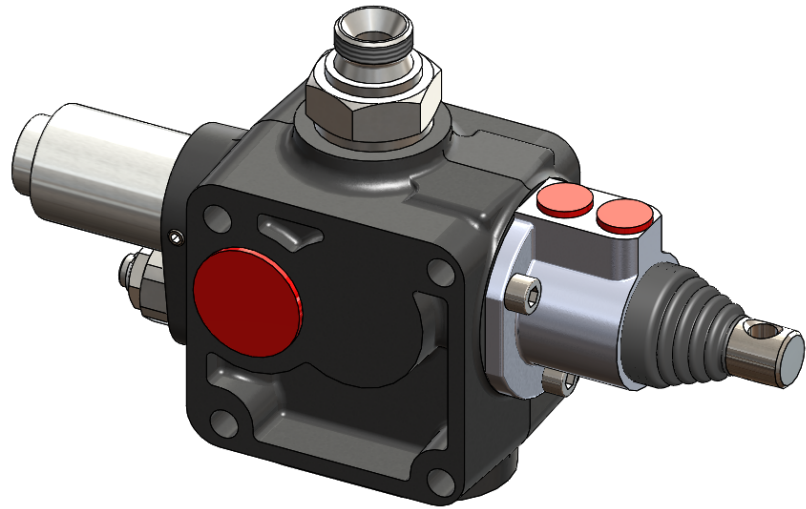
Relief valve with pre-set cartridge

Amortised relief valve and pre-set cartridge.

Check valve in the fitting, if needed.

Flange connection to tank or chassis is available

Pressure switch gauge

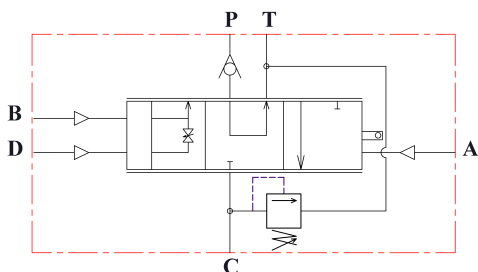


Technical specifications		
Flow rate	l/min [gpm]	70 [18]
Max. working pressure	bar [psi]	350 [5000]
Max. peak pressure (<.1 s)	bar [psi]	400 [5800]
T port max. pressure	bar [psi]	10 [145]
Mineral oil		ISO VG 46
Fluid temperature	° C [° F]	-25 to +80 [-13 to 176]
Viscosity range	mm ² /s [cSt]	12-100 [12-100]
Filtering ISO 4406 βx=75		20/17/25μm
Weight	kg [lbs]	3 [6.6]
Pneumatic working pressure	bar [psi]	4,5-12 [65-174]

Four different control options available:

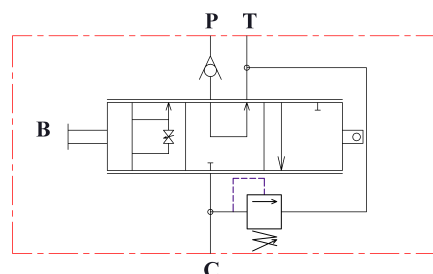
Air operated with knock off

Order code: TV18.20



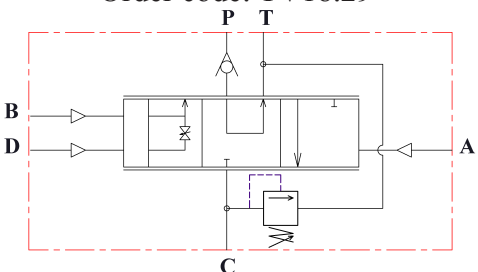
Cable operated with knock off

Order code: TV18.24



Air operated

Order code: TV18.29



Cable operated

Order code: TV18.21

