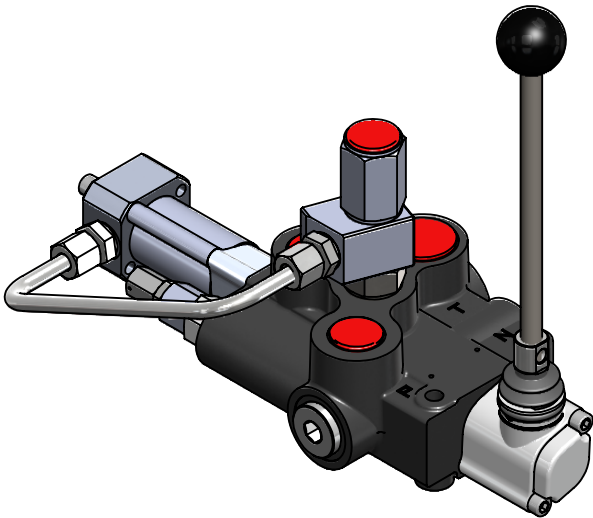


Advantage of operation:

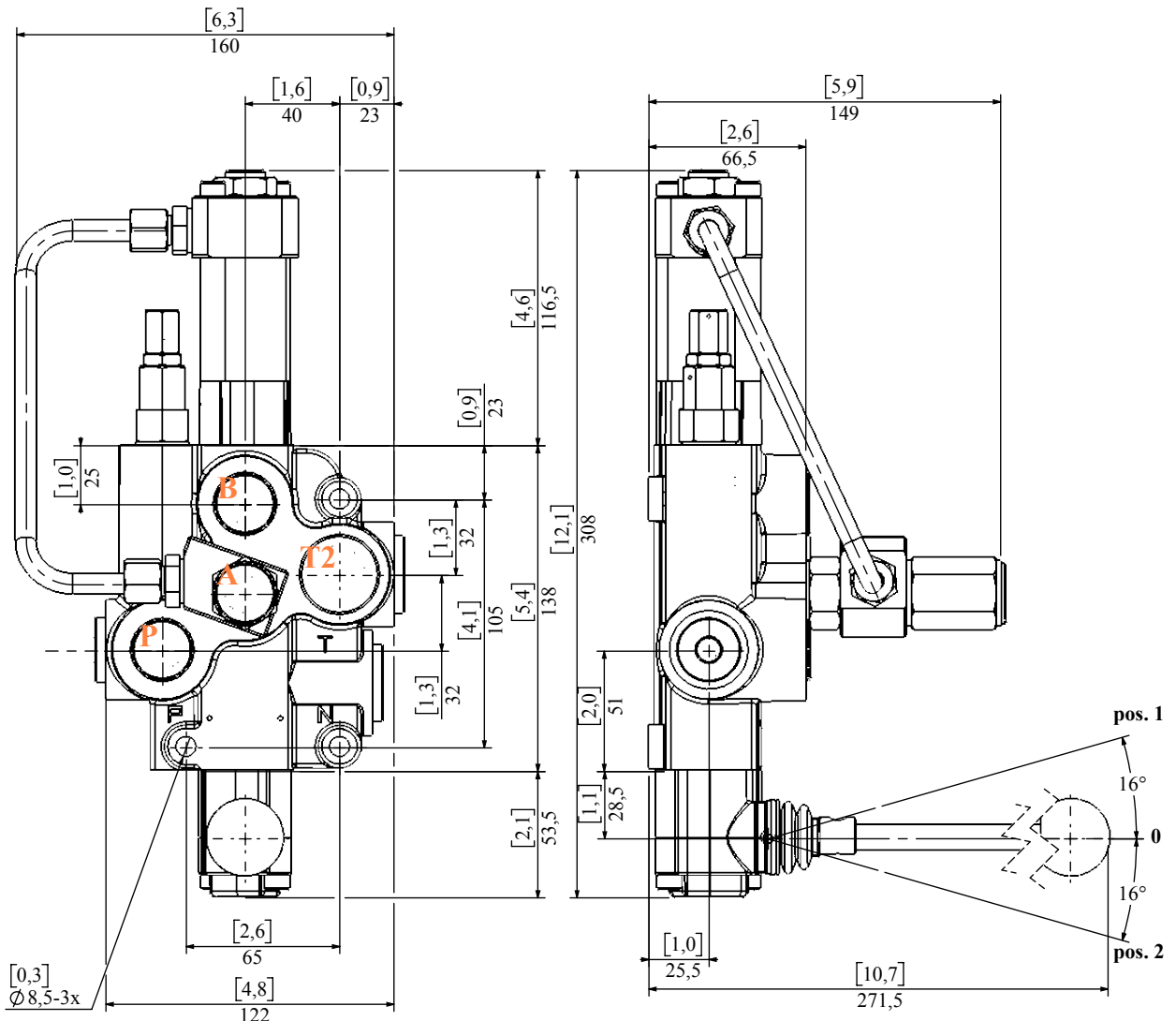
The device allows manual stroke control of the wedge (cylinder) during the log splitting. Following log splitting stroke when the operator releases valve lever, the device automatically reverses the stroke of the wedge until it reaches the opposite stroke end. Then and always automatically, the valve lever returns to the neutral position, so that the pump flow returns back to tank, saving energy.



Special valve with automatic return

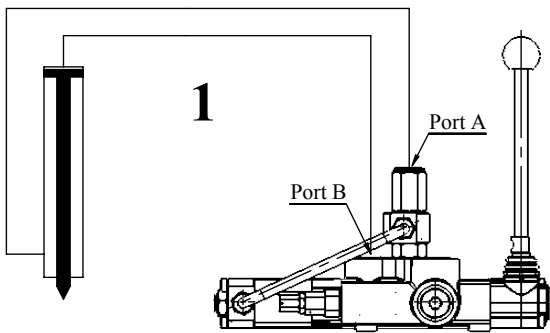
Nominal flow rate	35 l/min	9 gpm
Operating pressure (max.)	250 bar	3600 psi
Return pressure in A (max.)	60 bar	870 psi
Release pressure (min.)	135 bar	2000 psi
Back pressure (max.)	15 bar	220 psi

Standard threads				
	A, B	P1	T1, T2, N	Standard
G (BSP)	G 1/2	G 1/2	G 3/4	DIN 3852-2
S (UNF)	7/8-14 (SAE10)	7/8-14 (SAE 10)	1 1/16-12 (SAE 12)	ISO 11926

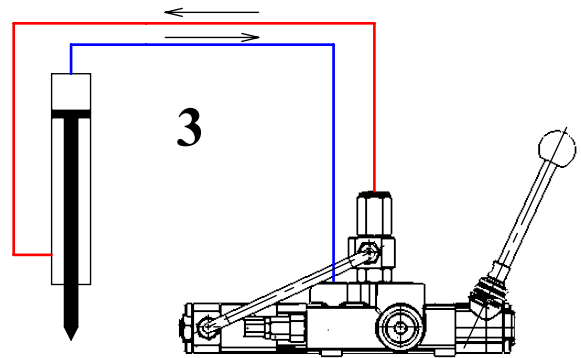


Z80 / A7hc / KZ1
Directional control valve for splitting machines

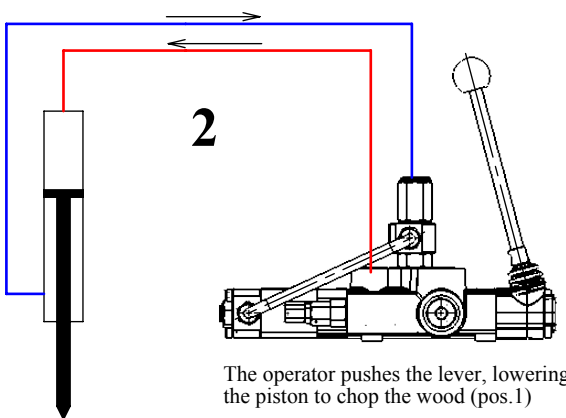
Operation - step by step



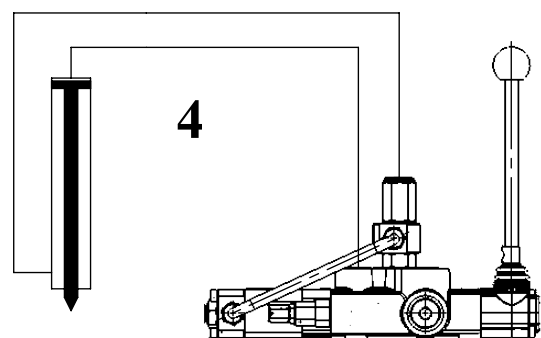
The handle is in neutral position (P-T)



The operator releases the handle, that moves on the opposite side and the cylinder moves all the way up. (pos.2)

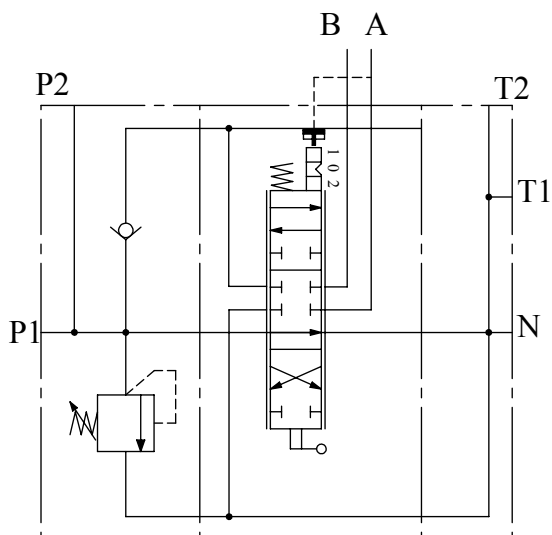


The operator pushes the lever, lowering the piston to chop the wood (pos.1)



At the stroke end, the handle returns automatically to center position (P to T)

Hydraulic scheme



Description code:
 Z80 A7hc KZ1 G